

Online Survey

As you review the slides, we kindly request your valuable feedback.
To share your thoughts, please [CLICK HERE](#) to access a concise online survey.

ZANCOR - RAMBLEWOOD DRIVE PARK

September 13, 2023. v1

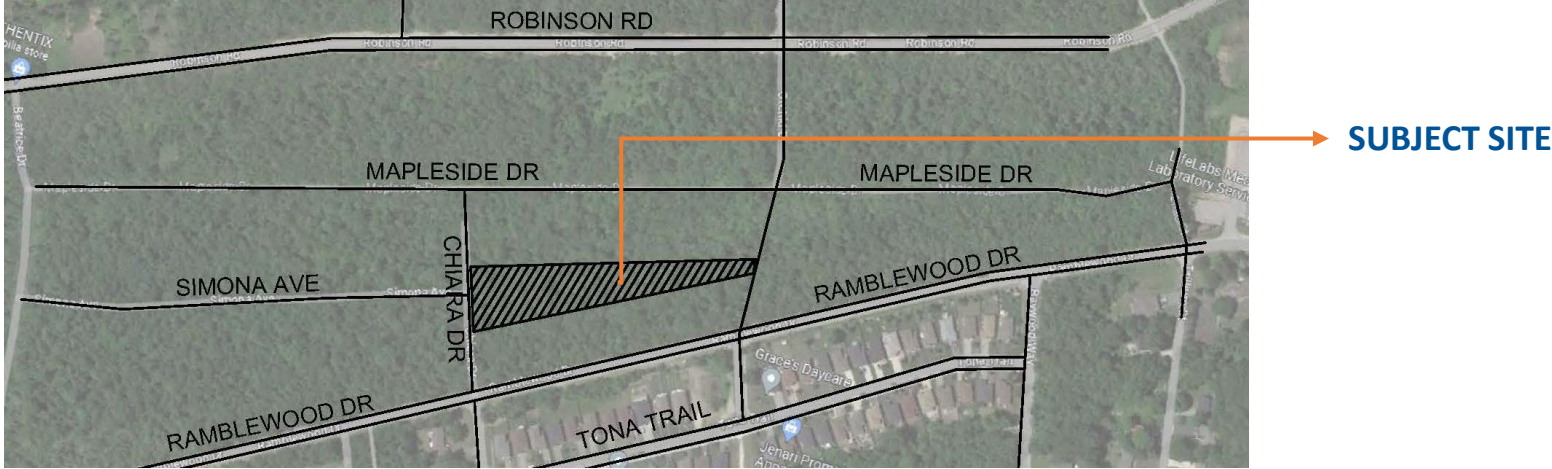


Prepared by: HKLA – Henry Kortekaas & Associates Inc.



INTRODUCTION

Zancor - Ramblewood Drive Park is located at Chiara Drive, Wasaga Beach, Ontario. The park block features a triangular shape and covers an area of approximately 1.0 hectare



Our objective is to create an innovative and dynamic plan that upholds the required levels of service for neighborhood parks, improves natural systems, and constructs park facilities and components with the durability to withstand substantial usage for many years into the future.



INTRODUCTION

The following facilities and elements are going to include in the **Zancor - Ramblewood Drive Park**:

- **Circulation Systems:**
 - 3m wide Primary Trail
 - 1.8m wide Secondary Walkway
- **Community Facilities:**
 - Multi-Purpose Play Court
 - Accessible Playgrounds + Play Equipment for varies age groups
 - Junior Play Area
 - Senior Play Area
- **Site Furniture Improvements:**
 - Benches
 - Tables
 - Armourstone Seating Blocks
 - Shade Structure (Provisional)
- **Planting Improvements:**
 - Deciduous Trees & Coniferous Trees (low maintenance)
 - Existing vegetation enhancements
 - Low maintenance Seeding
- **Naturalization & Restoration:**
 - Park Naturalization – Nottawasaga Valley Conservation Authority (NVCA)
 - Easterly 1/3 of the park block
 - NVCA Approved Native Planting Species
 - NVCA Approved Native Species Seeding

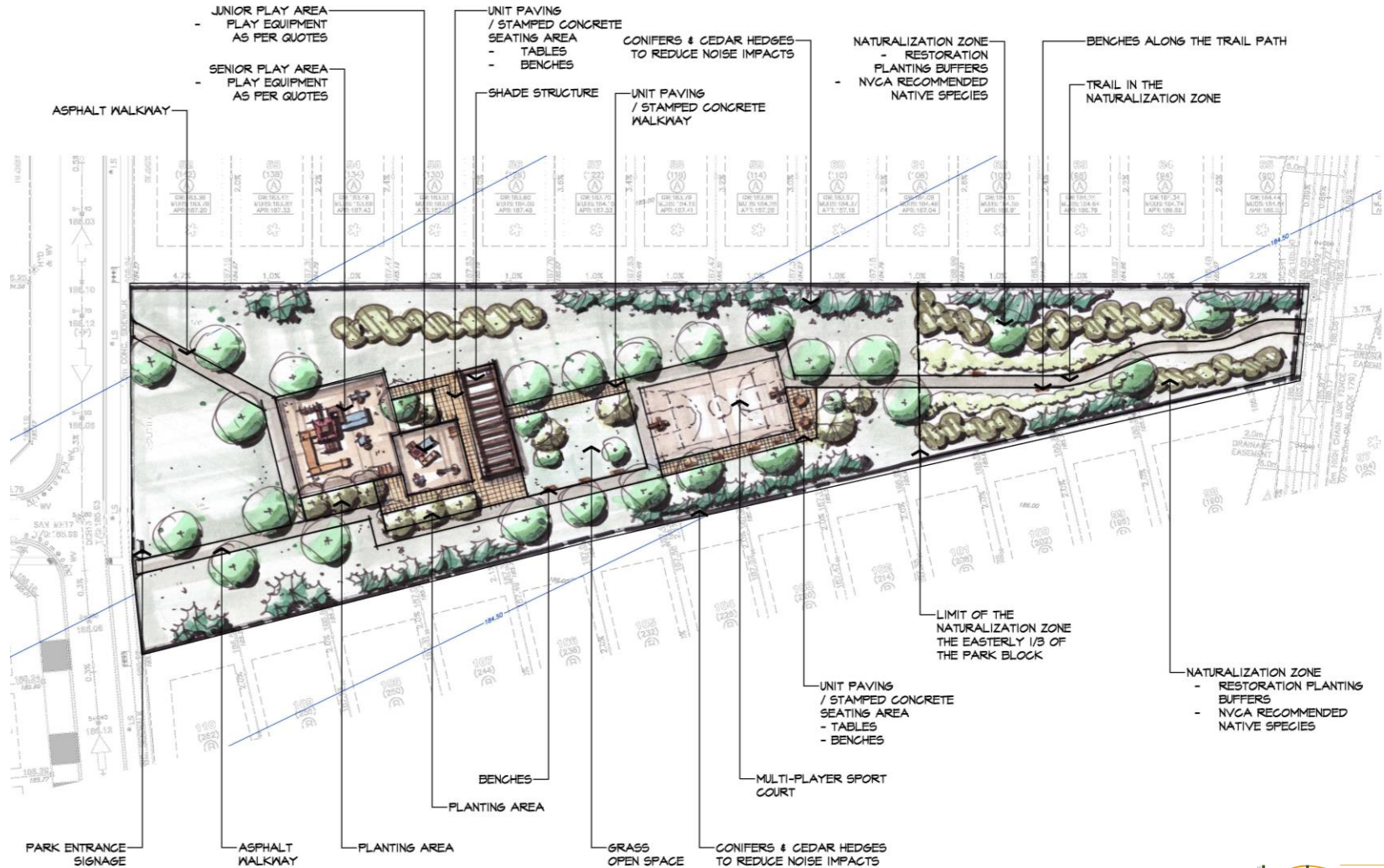


PARK CONCEPT PLAN

CONCEPT A

Key Attributes:

- Geometric Design Aesthetic
- Contemporary Styling
- "Enclosed" Open Space
- Landscape Buffer for Noise Mitigation
- Spacious Gathering Space
- Partially Shaded Playground

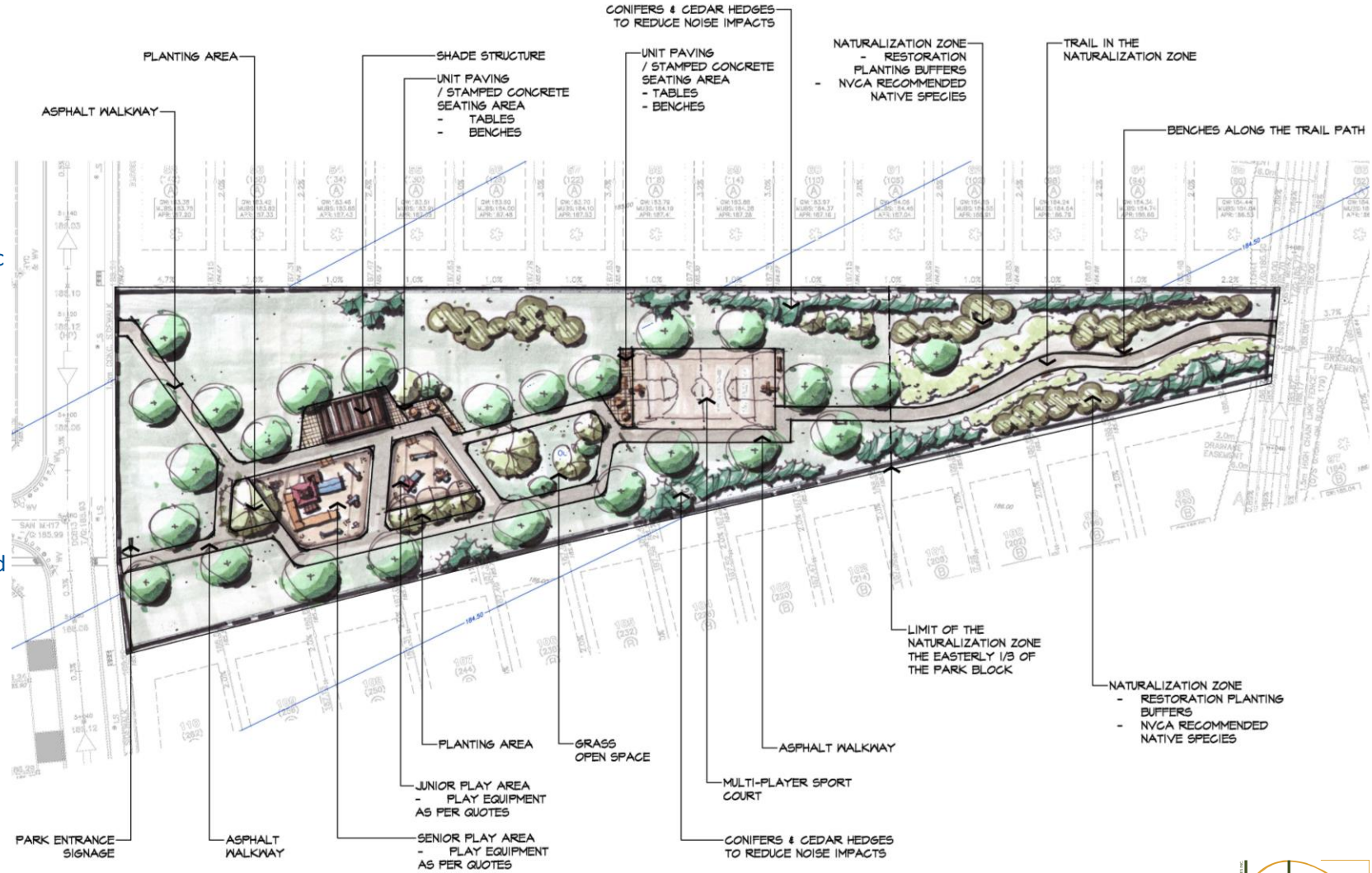


PARK CONCEPT PLAN

CONCEPT B

Key Attributes:

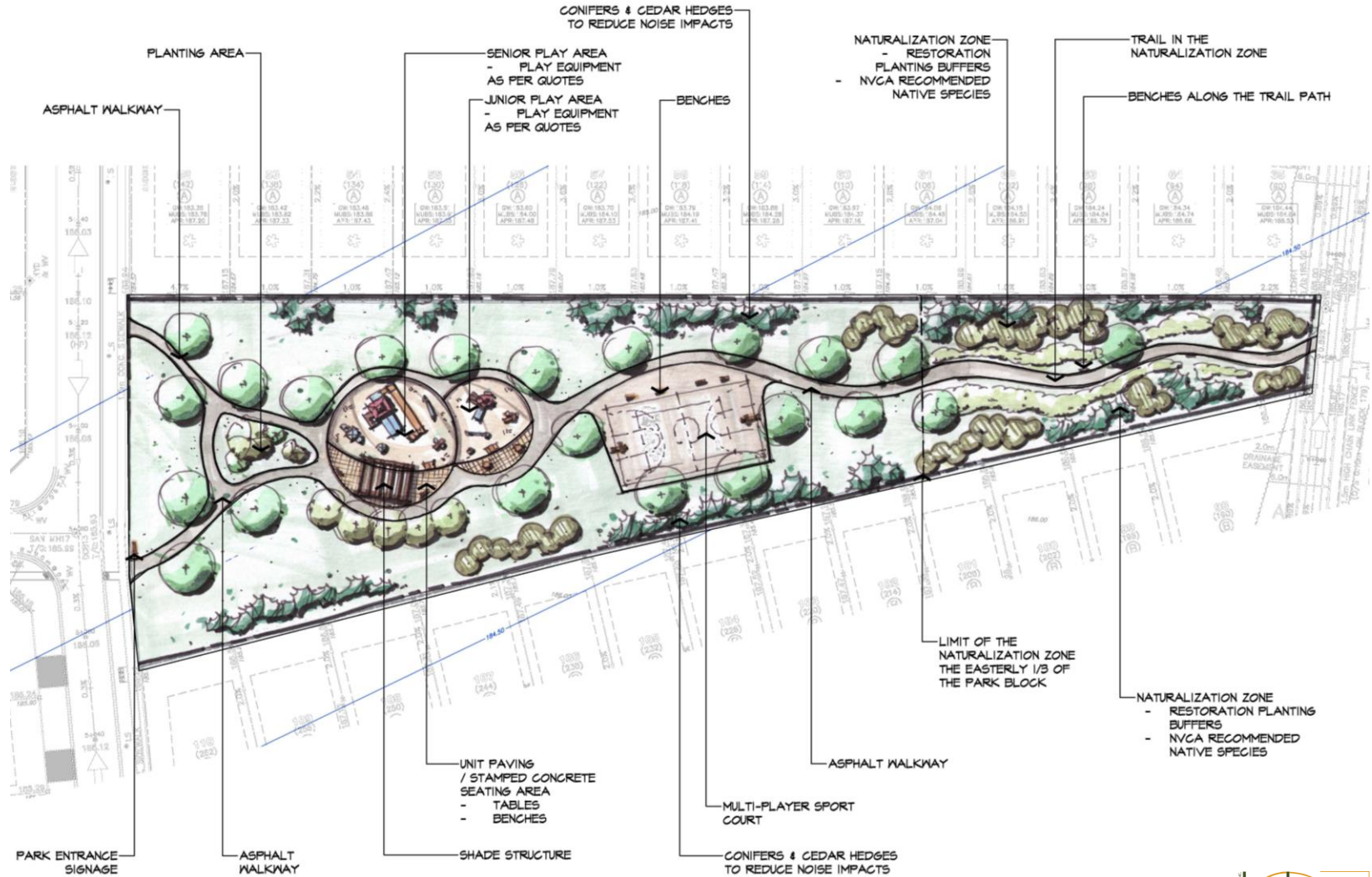
- Geometric Design Aesthetic
- Contemporary Styling
- "Enclosed" Open Space
- Landscape Buffer for Noise Mitigation
- Partially Shaded Playground
- Extra Circulation Pathway



CONCEPT C

Key Attributes:

- Curvilinear Design Aesthetic
- Traditional Styling
- Seamless Transition into Naturalization Zone
- Landscape Buffer for Noise Mitigation
- Environmentally Friendly - Minimized Construction Impact



PLAYGROUND EQUIPMENT

We have successfully completed the process of gathering multiple design proposals from four (4) different suppliers for the proposed playground equipment. The manufacturers are as follows:



1. ABC Recreation



2. Blue Imp



3. New World Park Solutions



4. Openspace Solutions

For all the available playground equipment options, our approach is guided by the following principles:

1. Ensuring accessibility for children with disabilities. Discovering play opportunities for children with disabilities.
2. Incorporating a range of play structures with varying difficulty levels to cater to diverse age groups (e.g., 2-5 years old and 5-12 years old) in order to maximize engagement for all players.
3. Complying with and surpassing all relevant CSA requirements to ensure 100% safety.
4. Complementing with the park's design.



PLAYGROUND EQUIPMENT

1.  ABC Recreation – OPTION A



PLAYGROUND EQUIPMENT

1.  ABC Recreation – OPTION B



PLAYGROUND EQUIPMENT

1.  ABC Recreation – OPTION C (Natural Theme)



PLAYGROUND EQUIPMENT

2.  **Blue Imp™** PLAY STRONG Blue Imp – OPTION A



  Paint Colours: Light Grey, Star Blue, Pastel Blue, Light Purple
Colours shown may not accurately reflect actual colours.

Ramblewood Dr. Park - Option 1
layout # A10721-1 | J08568



  Paint Colours: Light Grey, Star Blue, Pastel Blue, Light Purple
Colours shown may not accurately reflect actual colours.

Ramblewood Dr. Park - Option 1
layout # A10721-1 | J08568



Note: Site features shown (i.e. surfacing, border, landscaping, etc.) may not reflect actual scope of work and are purely conceptual.

Note: Site features shown (i.e. surfacing, border, landscaping, etc.) may not reflect actual scope of work and are purely conceptual.

Senior Playground

Senior Playground



PLAYGROUND EQUIPMENT

2.  **Blue Imp™**
PLAY STRONG Blue Imp – OPTION A



  Paint Colours: Light Grey, Star Blue, Pastel Blue, Light Purple
Colours shown may not accurately reflect actual colours.

Ramblewood Dr. Park - Option 1
layout # A10721-1 | J08568



Note: Site features shown (i.e. surfacing, border, landscaping, etc.) may not reflect actual scope of work and are purely conceptual.

Junior Playground



  Paint Colours: Light Grey, Star Blue, Pastel Blue, Light Purple
Colours shown may not accurately reflect actual colours.

Ramblewood Dr. Park - Option 1
layout # A10721-1 | J08568



Note: Site features shown (i.e. surfacing, border, landscaping, etc.) may not reflect actual scope of work and are purely conceptual.

Junior Playground



PLAYGROUND EQUIPMENT

2.  **Blue Imp™** PLAY STRONG Blue Imp – OPTION B



  Paint Colours: Teal, Lime Green, Light Purple
Colours shown may not accurately reflect actual colours.

Ramblewood Dr. Park - Option 2
layout # A10722-1-C1 | J08568



Note: Site features shown (i.e. surfacing, border, landscaping, etc.) may not reflect actual scope of work and are purely conceptual.

Senior Playground

  Paint Colours: Teal, Lime Green, Light Purple
Colours shown may not accurately reflect actual colours.

Ramblewood Dr. Park - Option 2
layout # A10722-1-C1 | J08568



Note: Site features shown (i.e. surfacing, border, landscaping, etc.) may not reflect actual scope of work and are purely conceptual.

Senior Playground



PLAYGROUND EQUIPMENT

2.  **Blue Imp™**
PLAY STRONG Blue Imp – OPTION B



  Paint Colours: Teal, Lime Green, Light Purple
Colours shown may not accurately reflect actual colours.

Ramblewood Dr. Park - Option 2
layout # A10722-1-C1 | J08568



Note: Site features shown (i.e. surfacing, border, landscaping, etc.) may not reflect actual scope of work and are purely conceptual.

Junior Playground

  Paint Colours: Teal, Lime Green, Light Purple
Colours shown may not accurately reflect actual colours.

Ramblewood Dr. Park - Option 2
layout # A10722-1-C1 | J08568



Note: Site features shown (i.e. surfacing, border, landscaping, etc.) may not reflect actual scope of work and are purely conceptual.

Junior Playground



PLAYGROUND EQUIPMENT

2.  **Blue Imp™** PLAY STRONG Blue Imp – OPTION C (Natural Theme)



Paint Colours: Metro Brown, Spring Green, Orange, Butternut Yellow, Fence Green
Colours shown may not accurately reflect actual colours.

Ramblewood Dr. Park - Option 3
layout # A10723-1-C1 | J08568



Note: Site features shown (i.e. surfacing, border, landscaping, etc.) may not reflect actual scope of work and are purely conceptual.



PLAYGROUND EQUIPMENT

3.  **NEW WORLD PARK SOLUTIONS** New World Park Solution – OPTION A



Senior Playground



Senior Playground



PLAYGROUND EQUIPMENT

- 3.  **NEW WORLD PARK SOLUTIONS** New World Park Solution – OPTION A



Junior Playground



Junior Playground



PLAYGROUND EQUIPMENT

3.  **NEW WORLD PARK SOLUTIONS** New World Park Solution – OPTION B (Natural Theme)



Senior Playground



Junior Playground



PLAYGROUND EQUIPMENT

3.  **NEW WORLD PARK SOLUTIONS** New World Park Solution – OPTION B (Natural Theme)



Junior Playground



Junior Playground



PLAYGROUND EQUIPMENT

- 3.  **NEW WORLD PARK SOLUTIONS** New World Park Solution – OPTION C



Senior Playground



Senior Playground



PLAYGROUND EQUIPMENT

3.  **NEW WORLD PARK SOLUTIONS** New World Park Solution – OPTION C



Junior Playground





Junior Playground



PLAYGROUND EQUIPMENT



4.  Openspace Solutions – OPTION A



 Town of Wasaga Beach | Ramblewood Drive Park Senior area 

Senior Playground



 Town of Wasaga Beach | Ramblewood Drive Park Senior area 



Senior Playground



PLAYGROUND EQUIPMENT



4.  Openspace Solutions – OPTION A



 Town of Wasaga Beach | Ramblewood Drive Park Junior area 

Junior Playground



 Town of Wasaga Beach | Ramblewood Drive Park Junior area 

Junior Playground



PLAYGROUND EQUIPMENT

4.  Openspace Solutions – OPTION B (Natural Theme)



IN CONCLUSION

The Zancor - Ramblewood Drive Park project is an exciting opportunity to enhance the community's recreational and natural areas. Our mission is to design an innovative and dynamic park plan that not only meets the neighborhood's needs but also enhances natural ecosystems. Our commitment to constructing durable facilities ensures that this park will remain a vibrant hub for years to come. The inclusion of various circulation systems, community facilities, site furniture, and planting improvements underscores our dedication to creating a useful and inclusive green space that will serve residents of all ages and interests. We look forward to bringing this vision to life and providing a valuable asset to the community.



1.



THANK YOU

